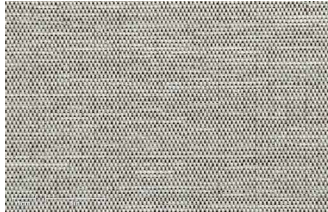
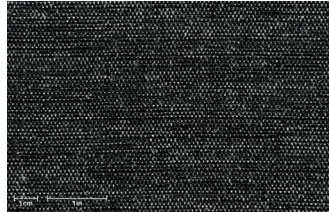


Baltic

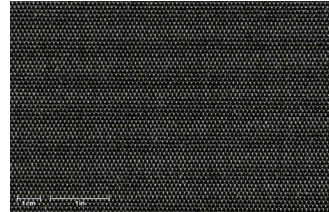
Classic collection



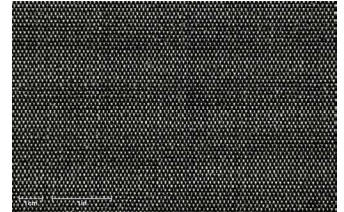
602/4100



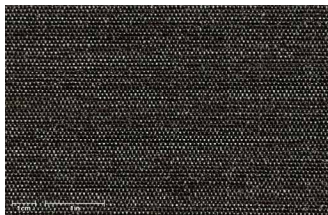
4200



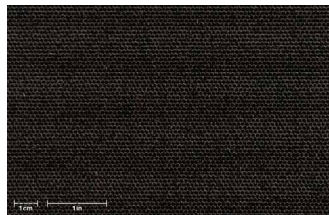
4201



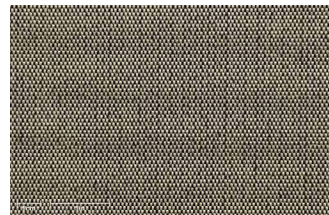
4202



4203



4204



4206



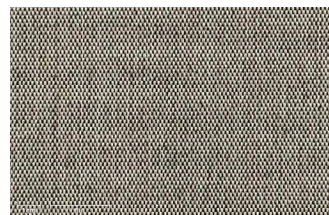
4207



4208



4209



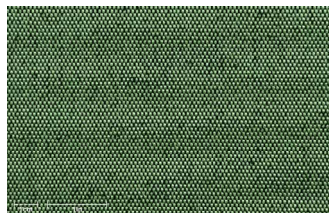
4210



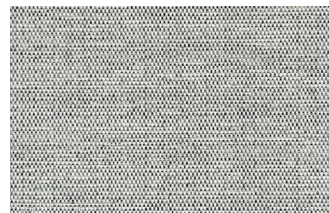
4211



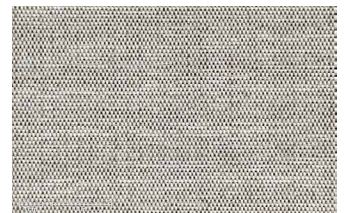
4212



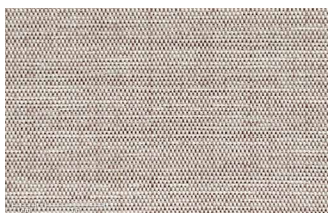
4213



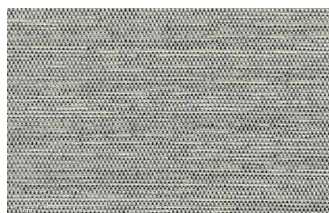
4220



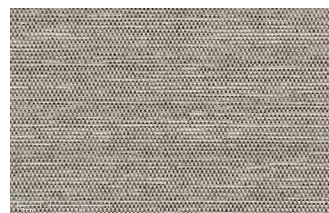
4221



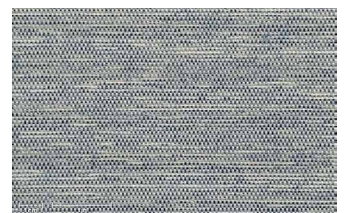
4222



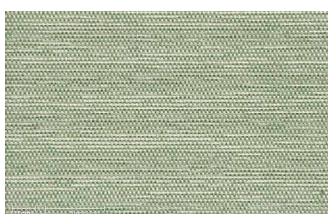
4223



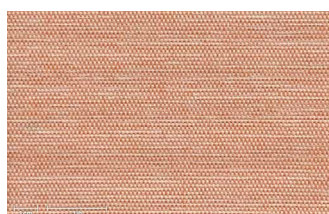
4224



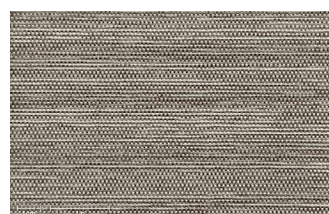
4225



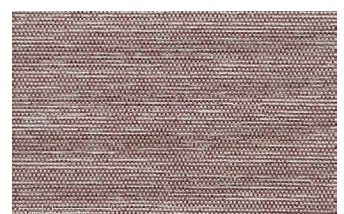
4226



4227



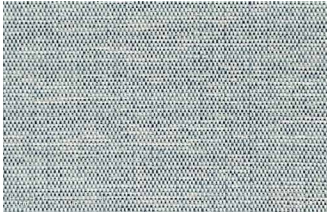
4228



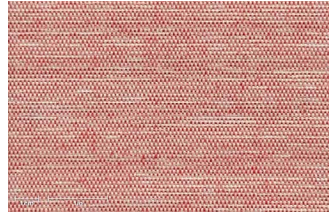
4229

Baltic

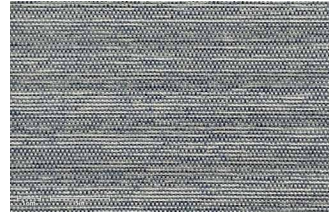
Classic collection



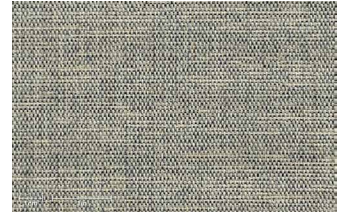
4230



4231



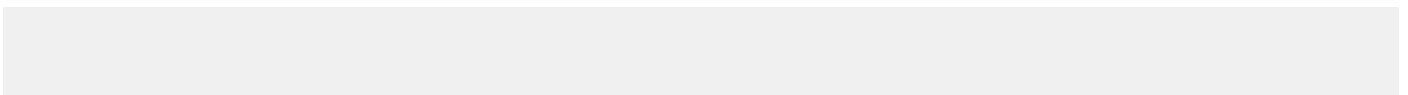
4232



4234



4240



Technical specifications

Composition	Solution dyed Olefin
Weight	190 g/m ²
Fabric width	160 cm
Roll length	50 m
Finish	Water repellent
Color fastness to light	>7 (max 8) 2.500 Grade 4/5 (max 5)
Color fastness to rubbing	4-5 (max 5)
Color fastness to swimming pool water	5 (max 5)
Spray test	5 (max 5)

Most used sectors

Cushions&Upholstery

Care instructions & Recommendations for Texsilk® durability:

- Let it air dry
- Store it protected from inclement weather
- Do not place next to reflecting surfaces or heating elements

