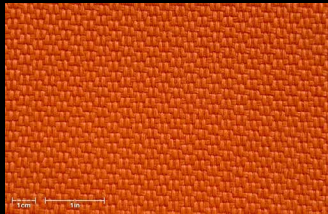
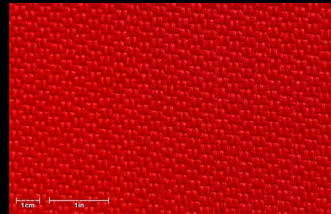


# Seúl Uni

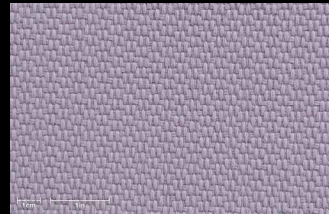
Evolution collection



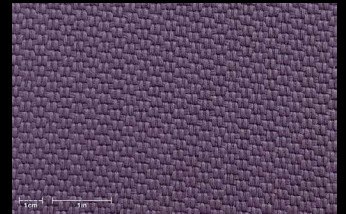
**SL-105**



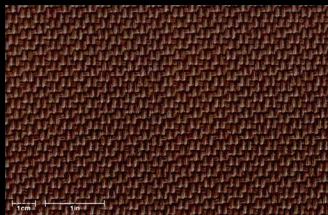
**SL-131**



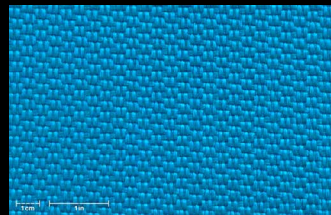
**SL-176**



**SL-183**



**SL-230**



**SL-306**



**SL-417**



**SL-426**



**SL-493**



**SL-501**



**SL-602**



**SL-619**



**SL-631**



**SL-649**



**SL-659**



**SL-700**



**SL-709**



**SL-710**



**SL-730**



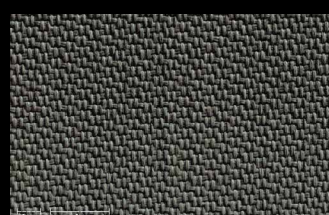
**SL-733**



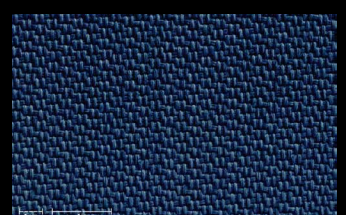
**SL-737**



**SL-751**



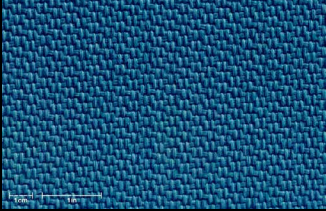
**SL-757**



**SL-821**

# Seúl Uni

Evolution collection



**SL-875**



**SL-3003**



## Technical specifications

Composition	Solution dyed Olefin
Weight	380 g/m <sup>2</sup>
Fabric width	160 cm
Roll length	25 m
Finish	Water repellent
Color fastness to light	>7 (max 8) 2.500 Grade 4/5 (max 5)
Color fastness to rubbing	4-5 (max 5)
Color fastness to swimming pool water	5 (max 5)
Spray test	5 (max 5)

## Most used sectors

Cushions&Upholstery

## Care instructions & Recommendations for Texsilk® durability:

- Let it air dry
- Store it protected from inclement weather
- Do not place next to reflecting surfaces or heating elements

