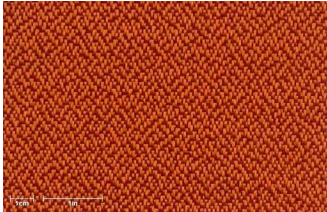
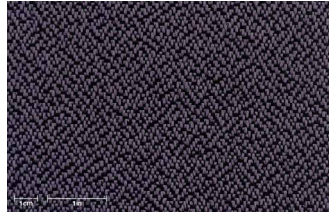


# Sahara

Classic collection



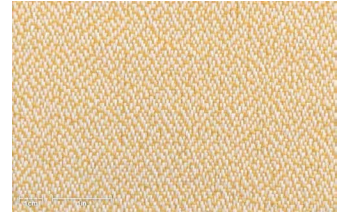
**CR-105/933**



**CR-183/501**



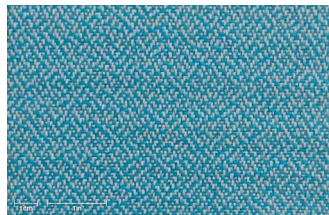
**CR-417/414**



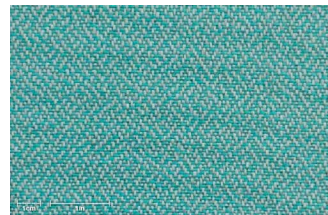
**CR-602/619**



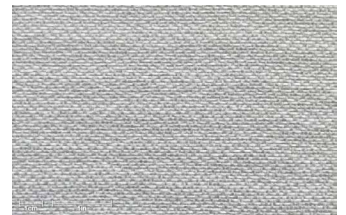
**CR-602/737**



**CR-649/306**



**CR-649/313**



**CR-649/602**



**CR-649/737**



**CR-709/709**



**CR-710/957**



**CR-739/700**

## Technical specifications

Composition	Solution dyed Olefin
Weight	200 g/m <sup>2</sup>
Fabric width	160 cm
Roll length	50 m
Finish	Water repellent
Color fastness to light	>7 (max 8) 2.500 Grade 4/5 (max 5)
Color fastness to rubbing	4-5 (max 5)
Color fastness to swimming pool water	5 (max 5)
Spray test	5 (max 5)

## Most used sectors

Cushions&Upholstery

## Care instructions & Recommendations for Texsilk® durability:

- Let it air dry
- Store it protected from inclement weather
- Do not place next to reflecting surfaces or heating elements

