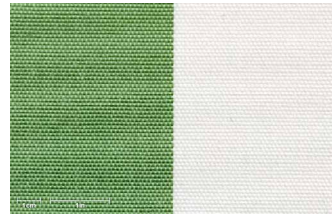


Rimini

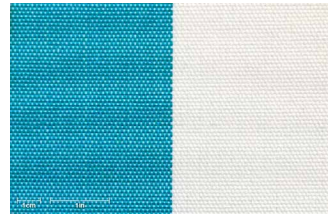
Classic collection



1001



1002



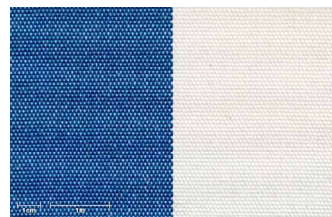
1003



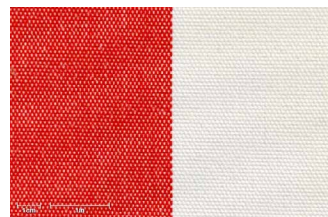
1004



1005



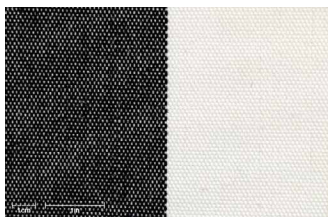
1006



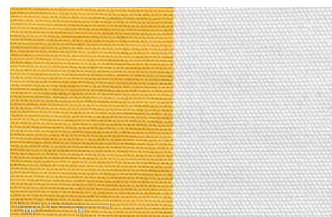
1007



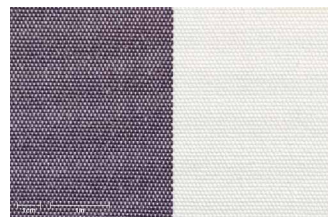
1008



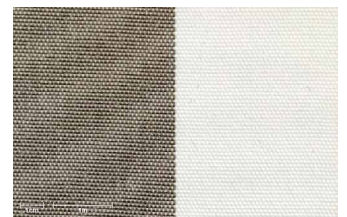
1009



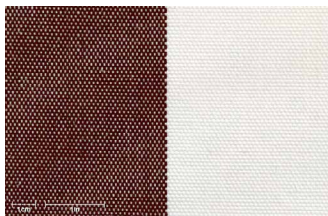
1010



1012



1017



1101

Rapport example



Technical specifications

Composition	Solution dyed Olefin
Weight	190 g/m ²
Fabric width	160 cm
Roll lenght	50 m
Finish	Water repellent
Color fastness to light	>7 (max 8) 2.500 Grade 4/5 (max 5)
Color fastness to rubbing	4-5 (max 5)
Color fastness to swimming pool water	5 (max 5)
Spray test	5 (max 5)

Most used sectors

Sunshades

Care instructions & Recommendations for Texsilk® durability:

- Let it air dry
- Store it protected from inclement weather
- Do not place next to reflecting surfaces or heating elements

