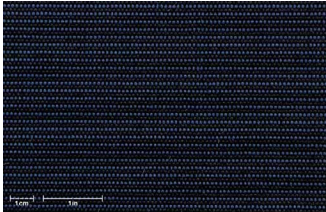
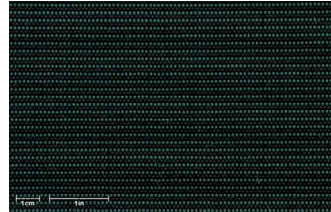


Marine

Classic collection



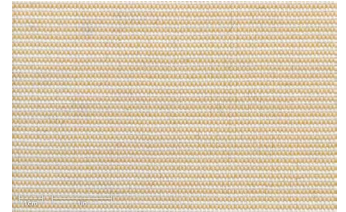
8502



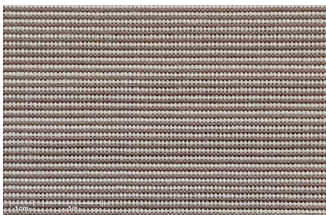
8503



8504



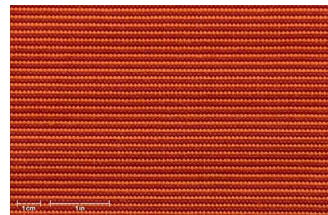
8505



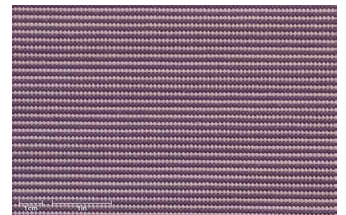
8506



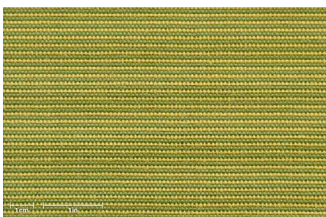
8507



8508



8509



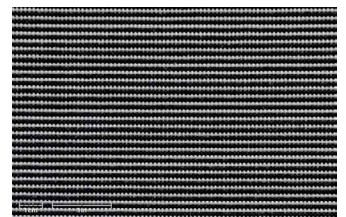
8510



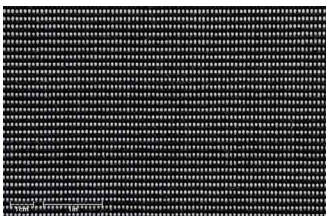
8511



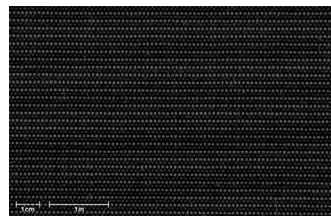
8512



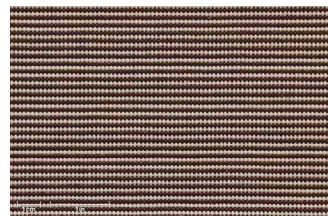
8513



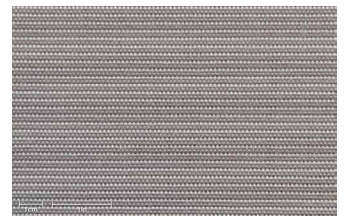
8514



8515



8518



8520

Technical specifications

Composition	Solution dyed Olefin
Weight	190 g/m ²
Fabric width	160 cm
Roll length	50 m
Finish	Water repellent
Color fastness to light	>7 (max 8) 2.500 Grade 4/5 (max 5)
Color fastness to rubbing	4-5 (max 5)
Color fastness to swimming pool water	5 (max 5)
Spray test	5 (max 5)

Most used sectors

Cushions&Upholstery, Marine, Sunshades

Care instructions & Recommendations for Texsilk® durability:

- Let it air dry
- Store it protected from inclement weather
- Do not place next to reflecting surfaces or heating elements

