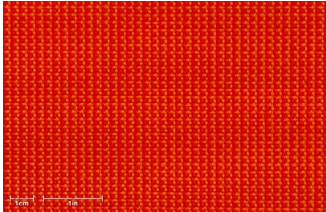
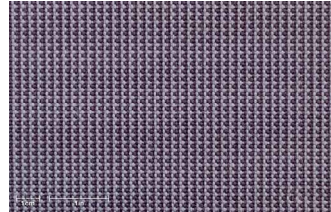


Florida

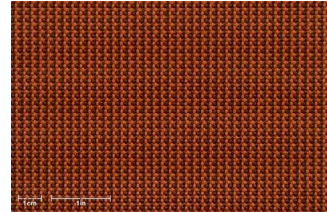
Classic collection



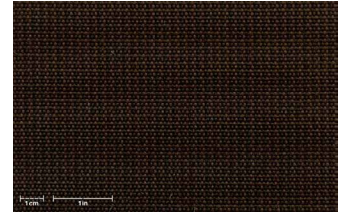
FL-132/105



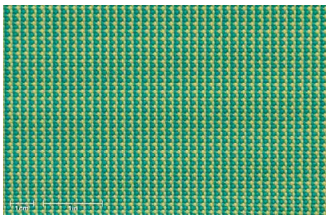
FL-183/176



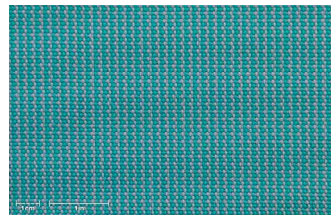
FL-200/714



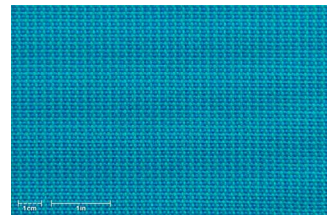
FL-230/734



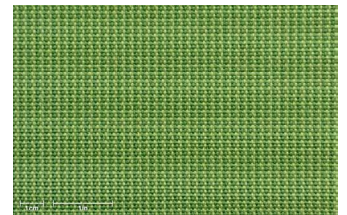
FL-313/62



FL-313/176



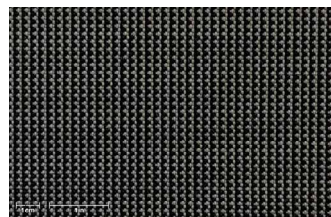
FL-313/306



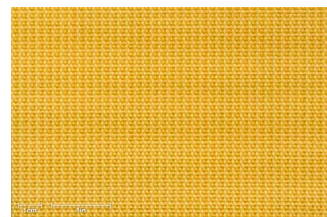
FL-414/417



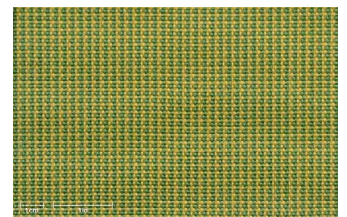
FL-426/417



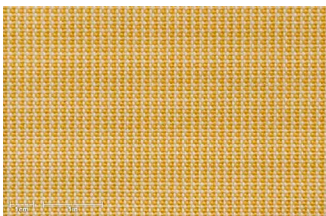
FL-501/631



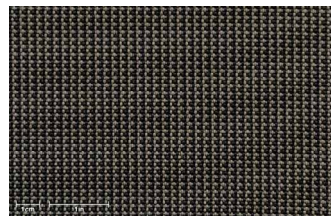
FL-619/62



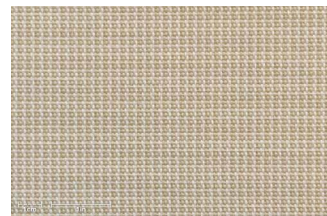
FL-619/414



FL-619/710



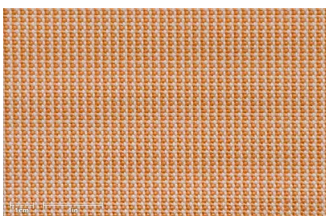
FL-709/700



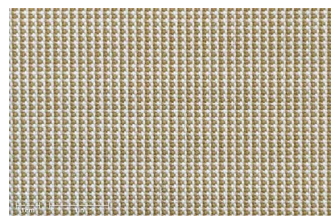
FL-710/737



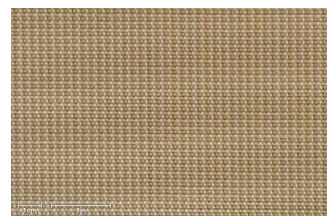
FL-730/602



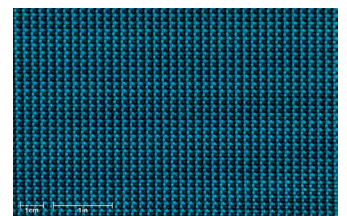
FL-730/620



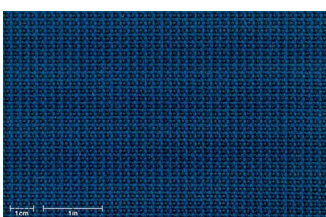
FL-751/602



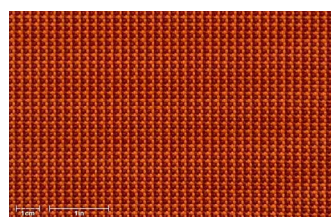
FL-751/737



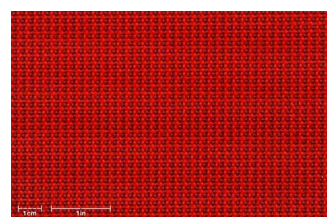
FL-860/306



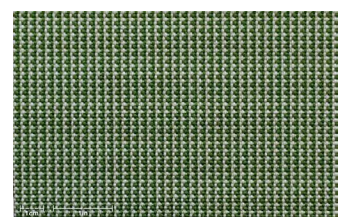
FL-860/821



FL-933/105



FL-933/132



FL-3003/649

Technical specifications

Composition	Solution dyed Olefin
Weight	190 g/m ²
Fabric width	160 cm
Roll length	50 m
Finish	Water repellent
Color fastness to light	>7 (max 8) 2.500 Grade 4/5 (max 5)
Color fastness to rubbing	4-5 (max 5)
Color fastness to swimming pool water	5 (max 5)
Spray test	5 (max 5)

Most used sectors

Sunshades

Care instructions & Recommendations for Texsilk® durability:

- Let it air dry
- Store it protected from inclement weather
- Do not place next to reflecting surfaces or heating elements

