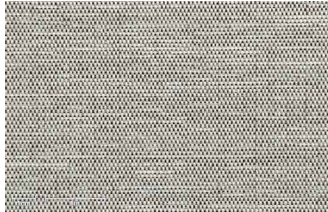
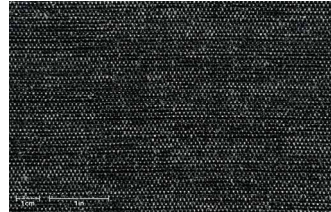


# Baltic

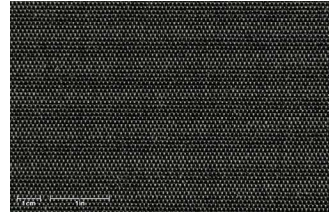
Classic collection



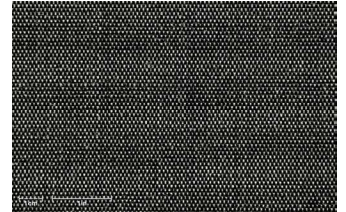
602/4100



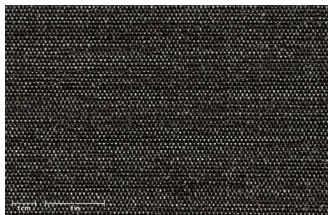
4200



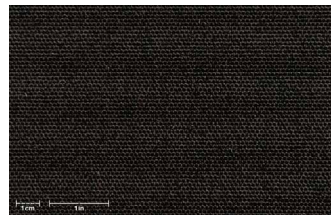
4201



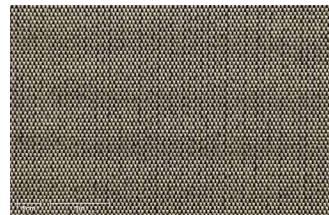
4202



4203



4204



4206



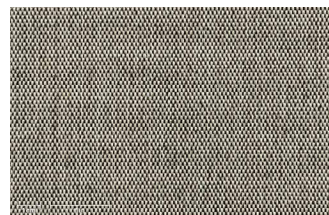
4207



4208



4209



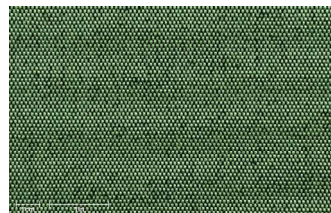
4210



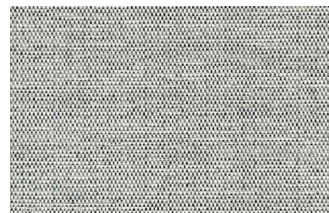
4211



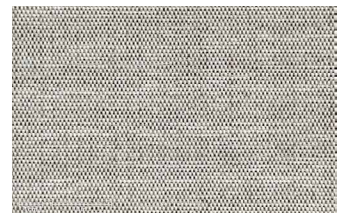
4212



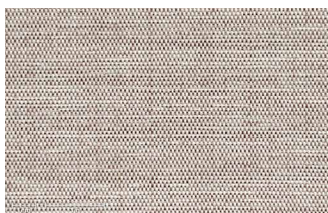
4213



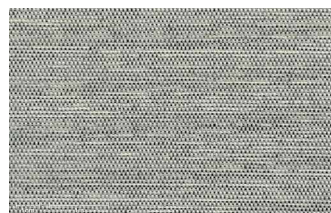
4220



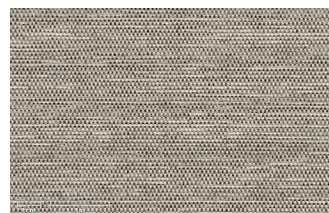
4221



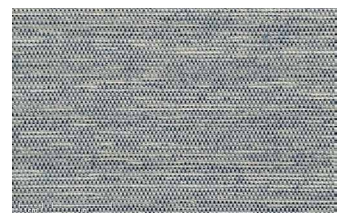
4222



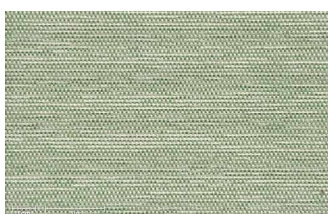
4223



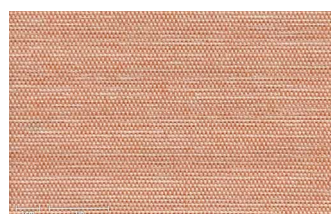
4224



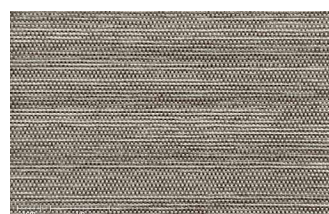
4225



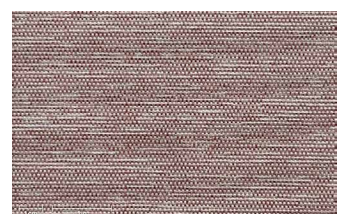
4226



4227



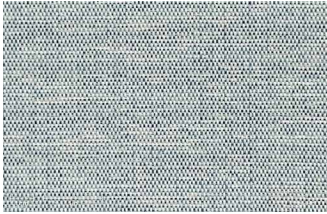
4228



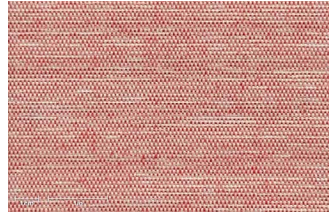
4229

# Baltic

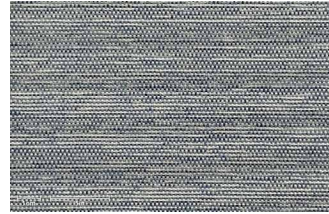
Classic collection



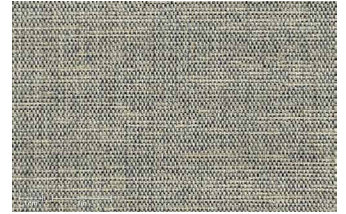
4230



4231



4232



4234



4240

## Technical specifications

Composition	Solution dyed Olefin
Weight	190 g/m <sup>2</sup>
Fabric width	160 cm
Roll length	50 m
Finish	Water repellent
Color fastness to light	>7 (max 8) 2.500 Grade 4/5 (max 5)
Color fastness to rubbing	4-5 (max 5)
Color fastness to swimming pool water	5 (max 5)
Spray test	5 (max 5)

## Most used sectors

Cushions&Upholstery

## Care instructions & Recommendations for Texsilk® durability:

- Let it air dry
- Store it protected from inclement weather
- Do not place next to reflecting surfaces or heating elements

