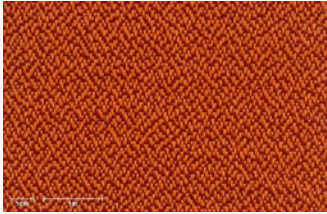
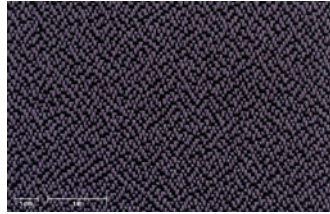
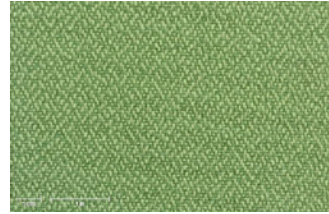

Sahara



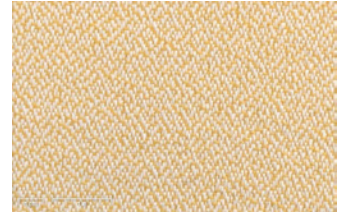
CR-105/933



CR-183/501



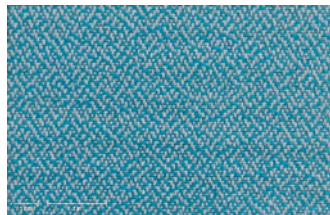
CR-417/414



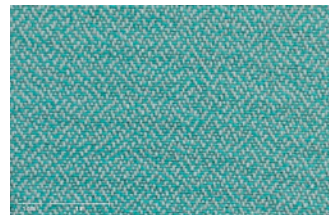
CR-602/619



CR-602/737



CR-649/306



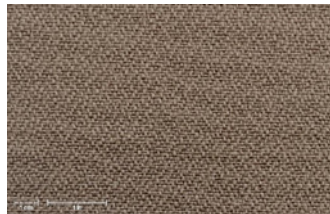
CR-649/313



CR-649/602



CR-649/737



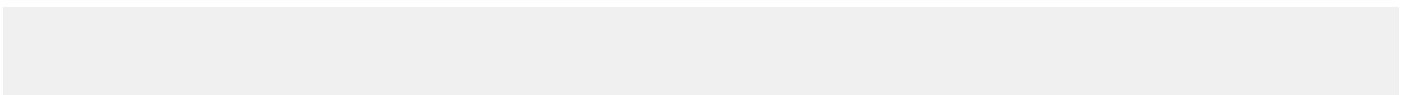
CR-709/709



CR-710/957



CR-739/700



Technical specifications

Composition	Solution dyed Olefin
Weight	200 g/m ²
Fabric width	160 cm
Roll length	50 m
Finish	Water repellent
Color fastness to light	>7 (max 8) 2.500 Grade 4/5 (max 5)
Color fastness to rubbing	4-5 (max 5)
Color fastness to swimming pool water	5 (max 5)
Spray test	5 (max 5)

Most used sectors

Cushions&Upholstery

Care instructions & Recommendations for Texsilk® durability:

- Let it air dry
- Store it protected from inclement weather
- Do not place next to reflecting surfaces or heating elements

